

Nordic minimalism

Micala
Hutchison

Interior Design & Styling

Contents

Brief, scope and budget overview

Before photos

Kitchen design

Bathroom design

Next steps

Brief, scope & budget overview

Existing apartment: Beautiful loft style apartment situated in the heart of the Jordaan. 60 sqm, 3.2m high ceilings with exposed wooden rafters, and gorgeous French doors.

Brief: Update the kitchen and bathroom to reflect a minimal Nordic style, and capitalise on the beautiful high ceilings with some additional, minimal storage.

Important aspects to consider: The wood floor is only five years old, so a solution on how to add new floorboards if needed (for example if the layout changes expose areas with no flooring) is needed. I also need to find a way to connect electrics to the new kitchen from the mains to accommodate both an electric oven and electric cook top with extractor, either via below the floor or within the ceiling and walls.

Project scope: Remove old kitchen and re-wire to accommodate both an electric oven and electric cook top with extractor. Design a new kitchen that improves functionality and maximises the space. New built in ceiling LED spots. Refresh the bathroom with new tiles and bathroom furniture, whilst retaining the bathtub. Refresh the WC with new sanitary and new tiles. New paint throughout the living area only.

Interior design costs €2,800

- Kitchen Design - 2D Floorplan, elevations and 3D visuals €1,500
- Kitchen production - Meeting with supplier and assisting client with approval process €300
- Bathroom Design - 2D Floorplan, elevations, 3D visuals and materials & furniture list €1,000
- Bathroom production - Briefing trades not yet quoted for as moved to a later phase

Before photos

Before photos
Kitchen



Before photos
Bathroom



Design

Kitchen design

Bathroom design

Kitchen

Chapter contents

Floorplan

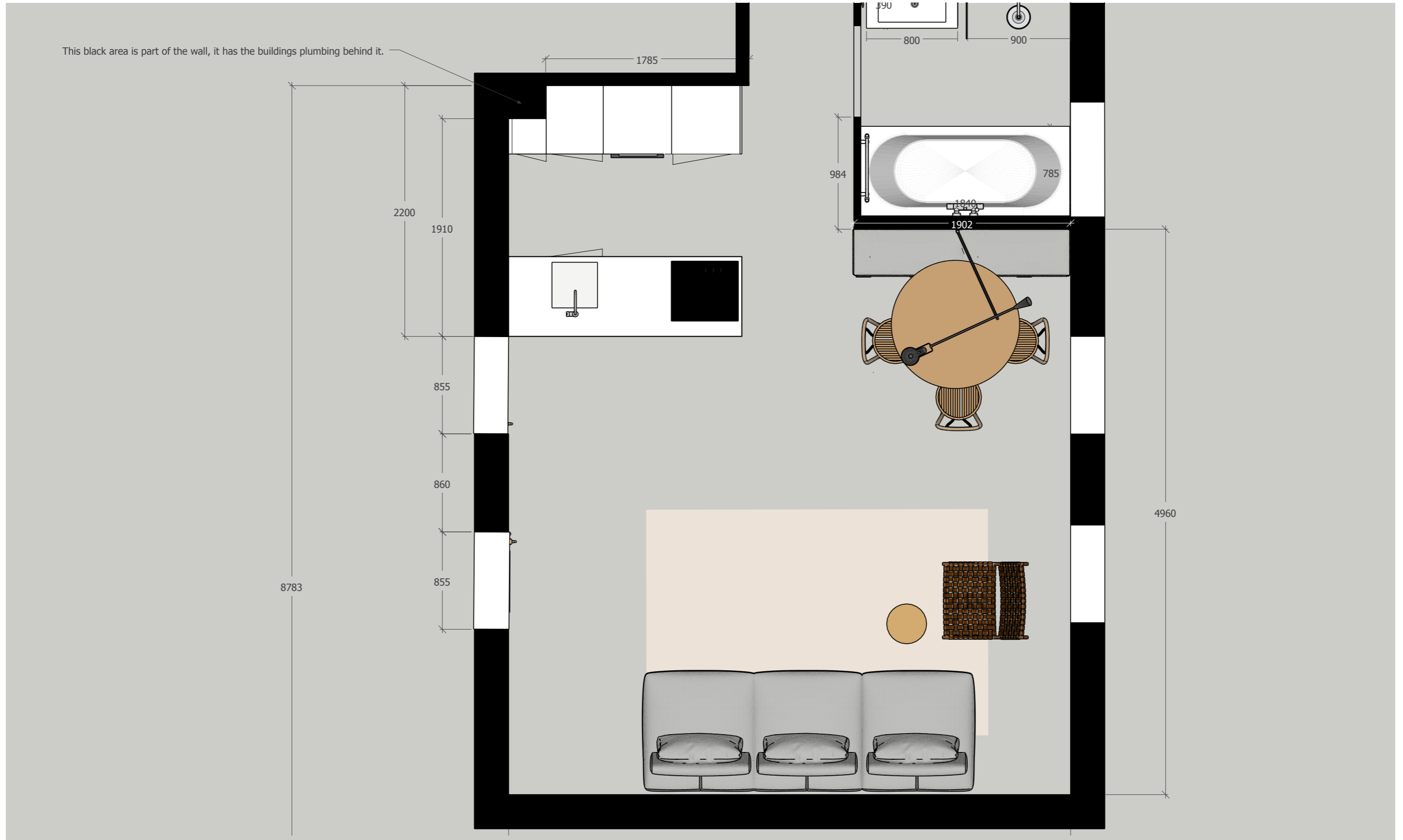
3D visuals

Elevations

Mood-board

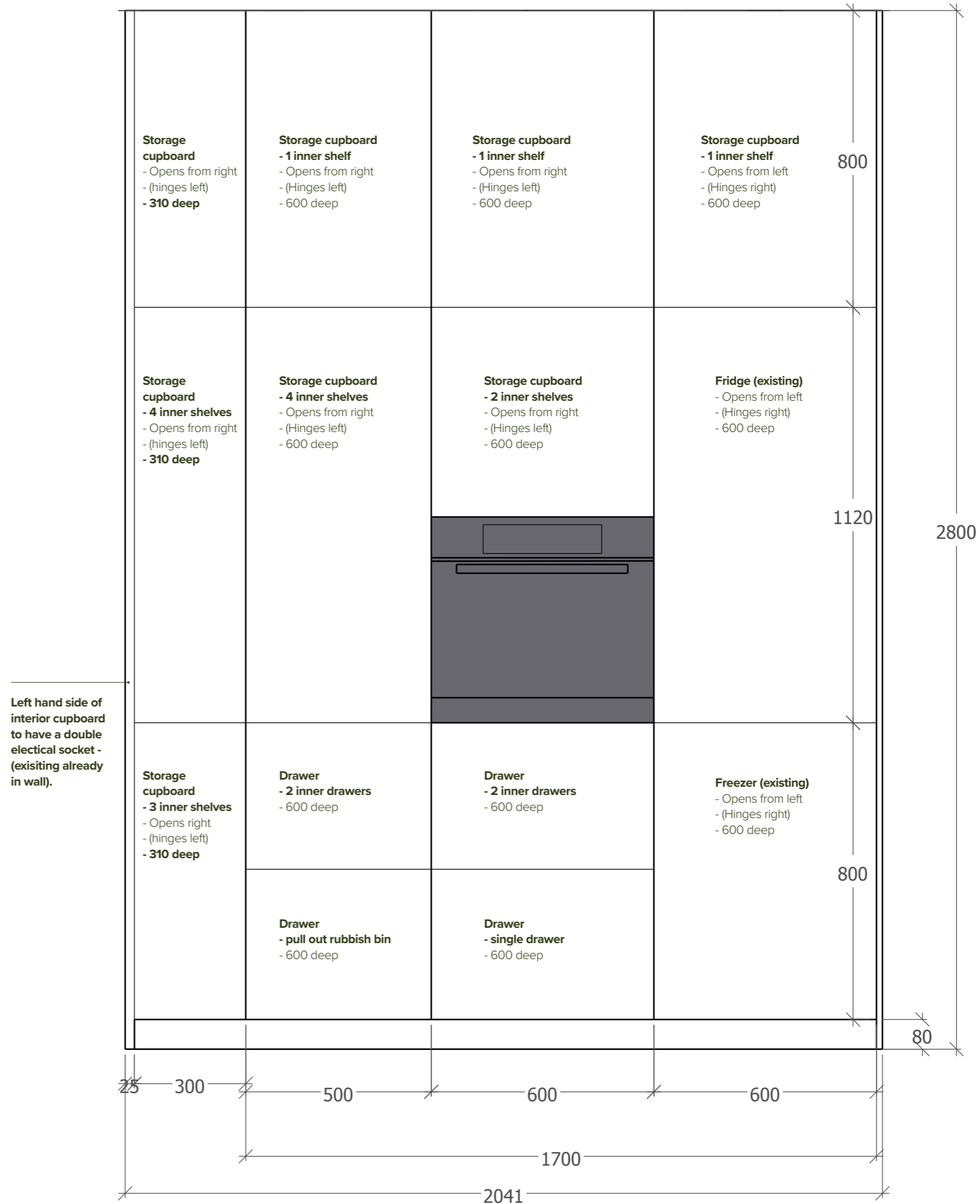
Peninsula kitchen

Full living room overview (close up on next page)



Peninsula kitchen

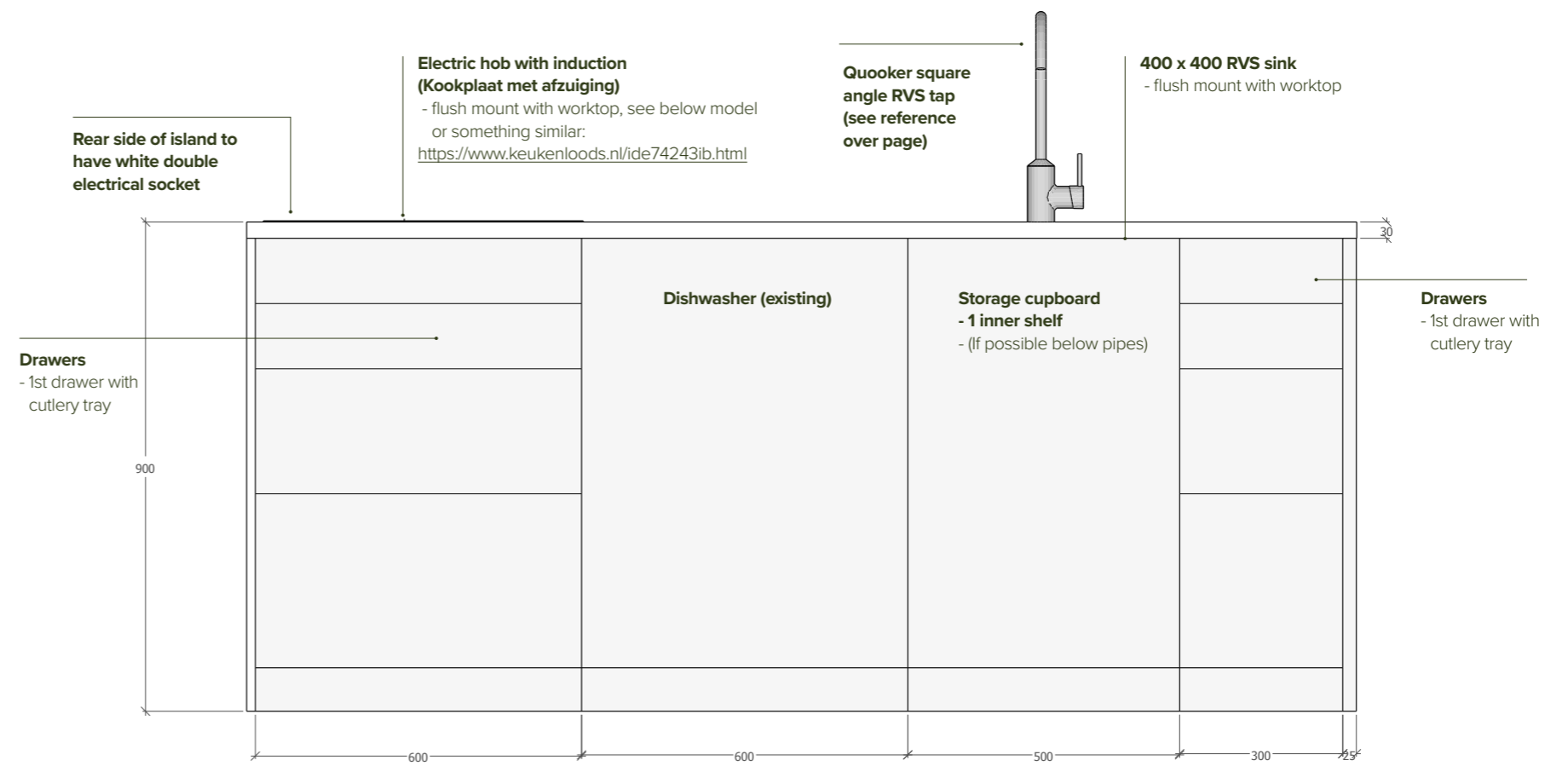
Elevations of appliance wall



Please note. Elevations are black and white and not indicative of fixtures or finishes

Peninsula kitchen

Elevations of island



Please note. Elevations are black and white and not indicative of fixtures or finishes

Peninsula kitchen - 3d visuals



Kitchen colour palette & mood-board

A minimalistic, neutral palette with Nordic and subtle industrial nuances



White worktop - stain free and durable, open to suggestions. Approx 20 - 30mm thick, client to confirm at appointment.



White cabinetry with powdery finish - similar to 'phoenix' material.

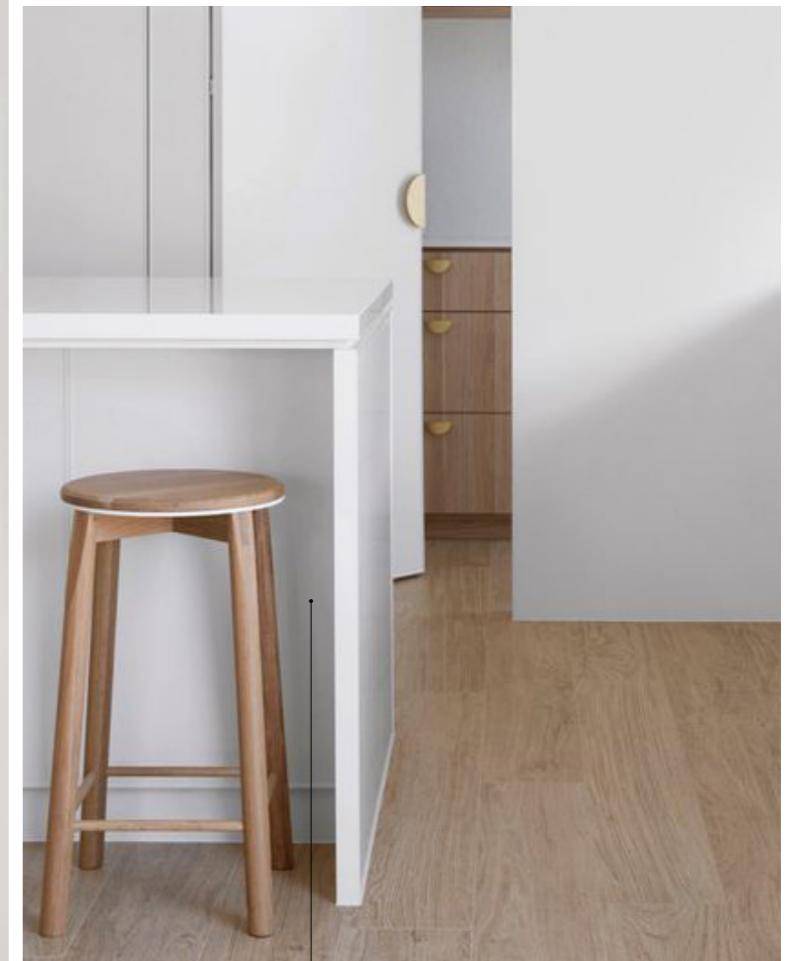
Induction electrical hob, for both minimal aesthetic and future proofing the kitchen. **Can this sit flush with the top of the bench surface like it does here?**



Sink to sit underneath the bench

Minimal white handles on all drawers and cupboards

Squared RVS tap with Quooker boiling water



Small (100mm) deep overhang on outer side of island

Bathroom

Chapter contents

Mood-board

Bathroom 2d layout

Bathroom 3d visuals

Bathroom colour palette & mood-board

A minimalistic, neutral palette with Nordic and subtle industrial nuances



Free-standing shower screen

Concrete floor tiles for the bathroom



Unique textured tile, in a similar tone to the concrete floor

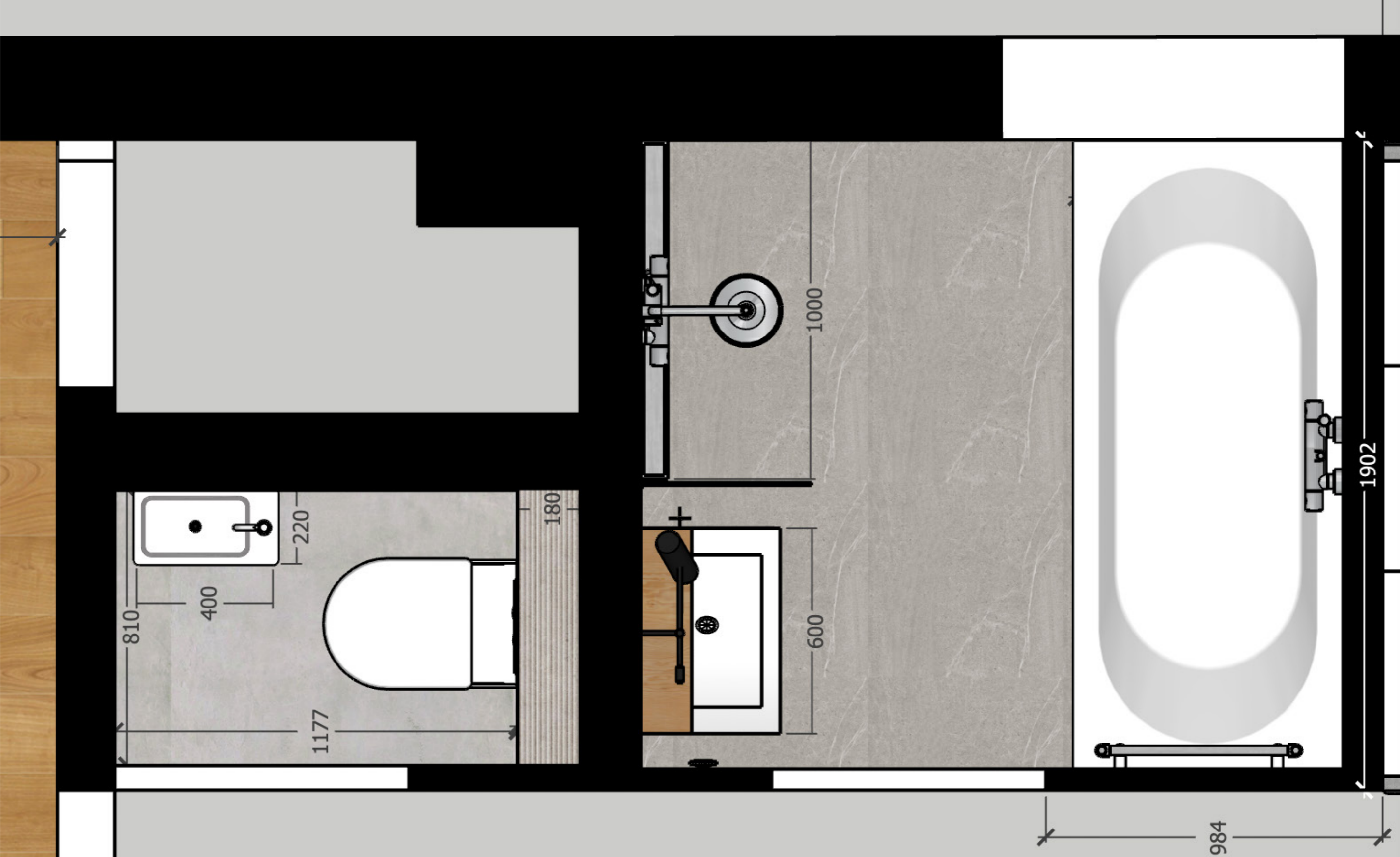


Concrete floor and wall tiles for the toilet

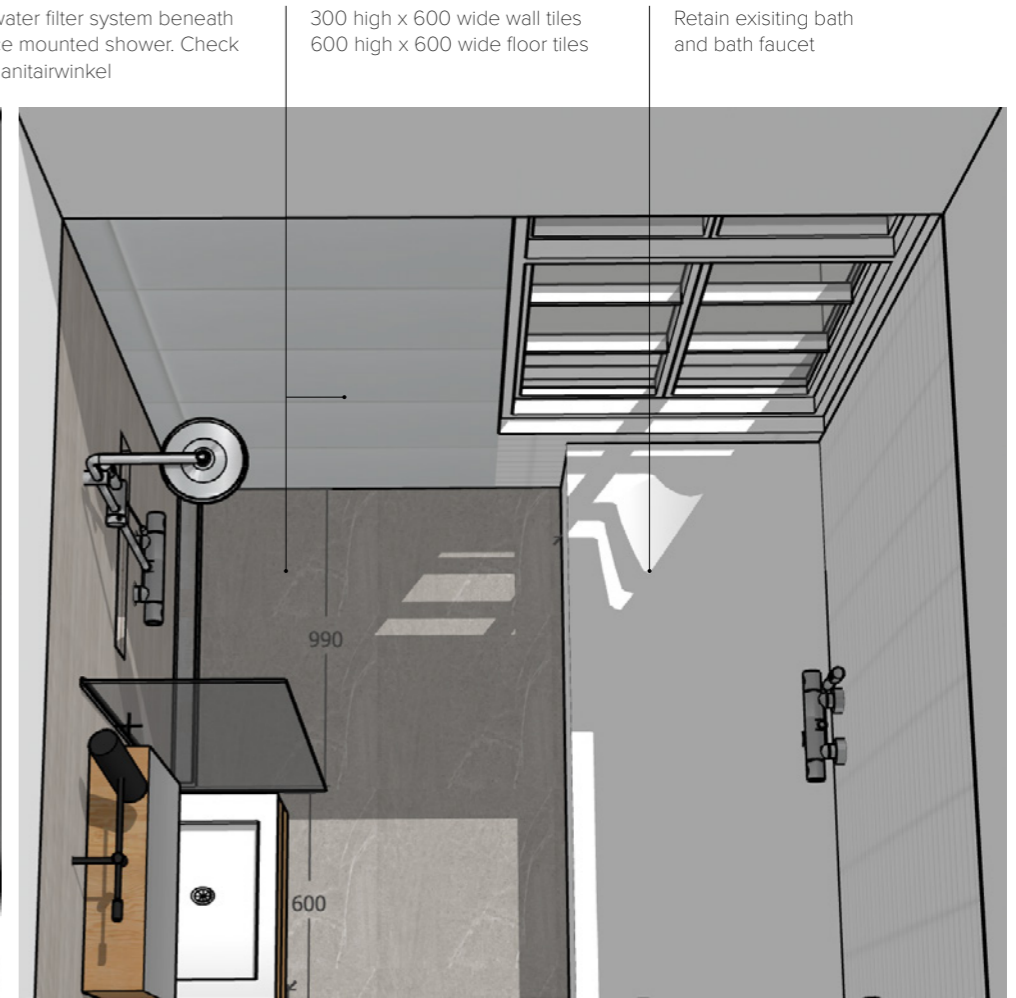
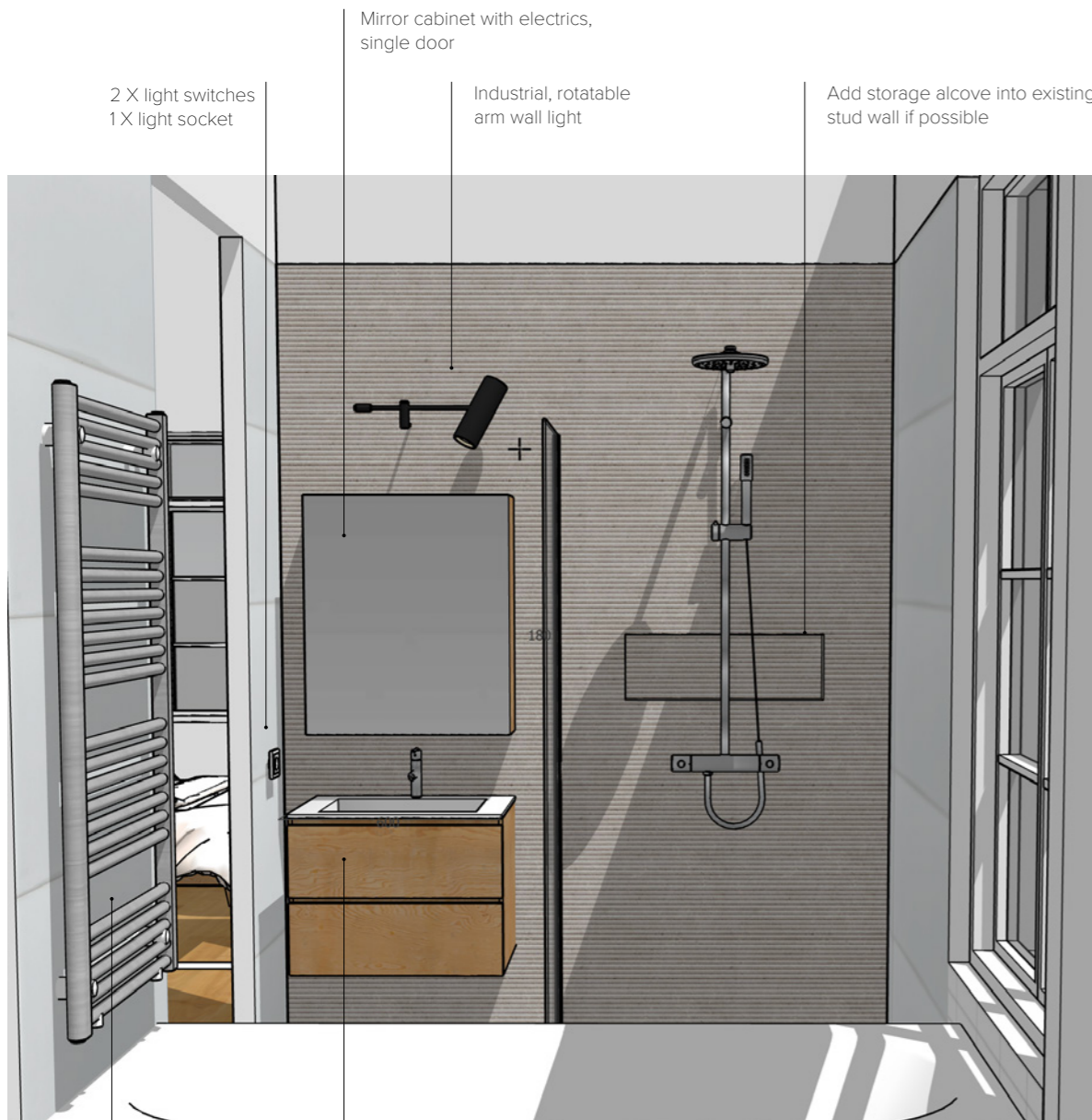


Oak cabinetry with free-standing white sink

Bathroom & WC - 2D floorplan layout



Bathroom & WC - 3D visuals



Retain existing
radiator

Two drawer MDF oak cabinet with
sink mounted tap

Retain existing
toilet sink

New toilet, but retain
existing reservoir



300 high x 600 wide wall tiles
600 high x 600 wide floor tiles

300 high x 600 wide wall tiles
600 high x 600 wide floor tiles

